

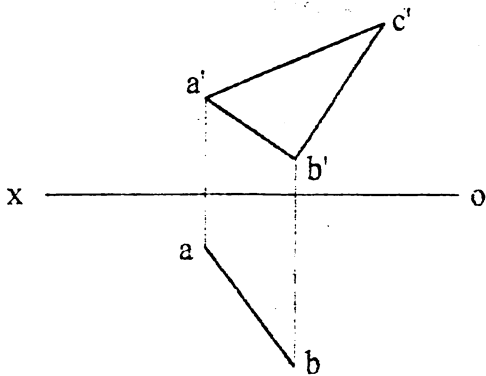
# 武汉理工大学

武汉理工大学2005年研究生入学考试试题

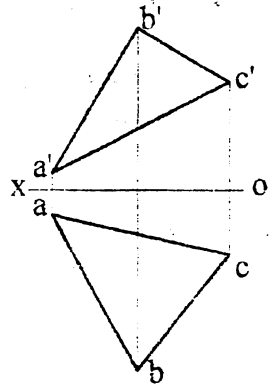
课程代码: 856 课程名称: 画法几何

(共 4 页, 共 11 题, 总分150, 做题时直接在试卷上作图)

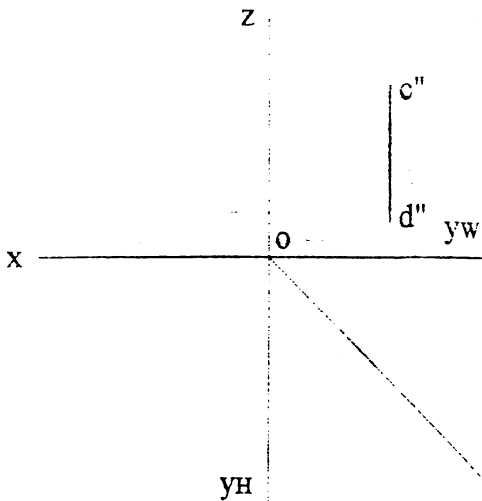
1. 用换面法补全以AB为底边的等腰 $\triangle ABC$ 的水平投影。(10分)



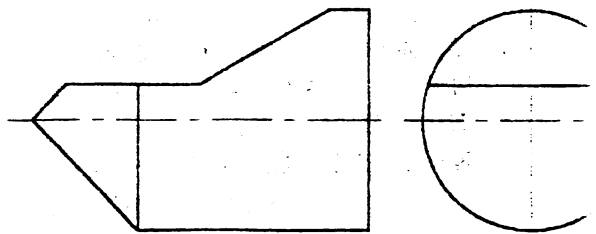
2. 在 $\triangle ABC$ 内作直线DE, 使其平行于BC边且相距20mm.



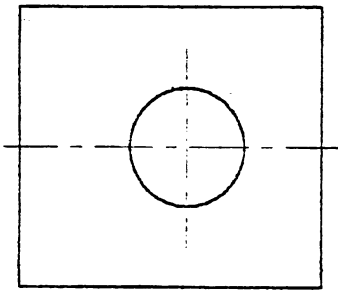
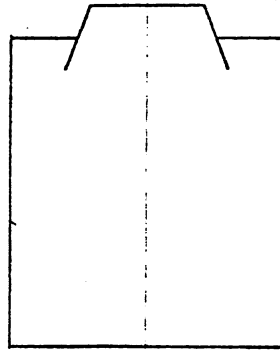
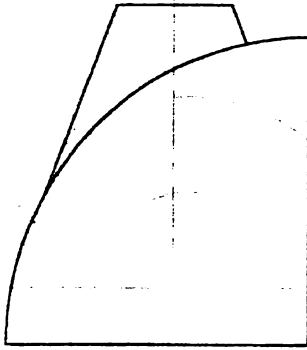
3. 已知CD为一铅垂线, 它到V面及到W面的距离相等, 求作它的其余两面投影。(14分)



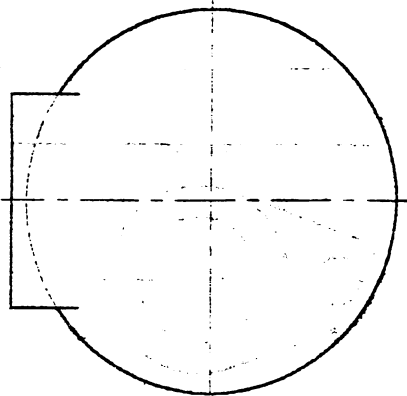
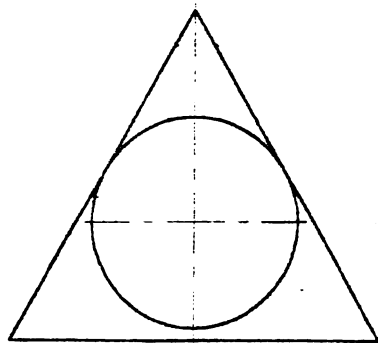
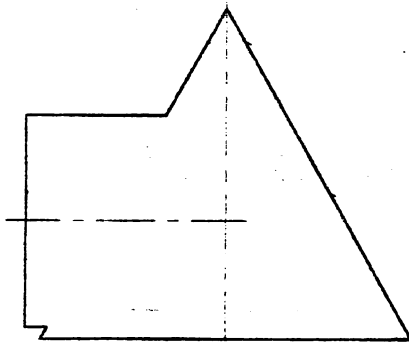
4. 画出共轴的圆锥和圆柱被截切后的水平投影(15分)



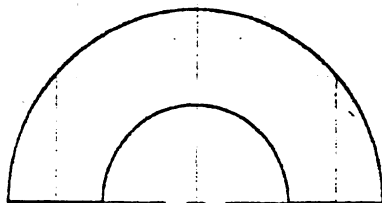
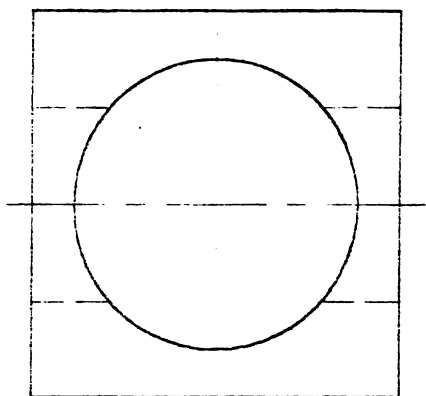
5. 求圆柱与圆锥的相贯线，并补全图中所缺的曲面投影的转向轮廓线。(15分)



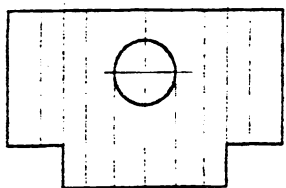
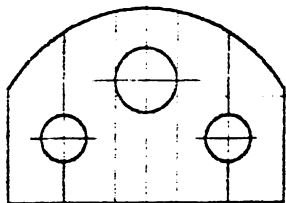
6. 作出圆柱与圆锥相贯线的投影，补全图中所缺的曲面投影的转向轮廓线。(14分)



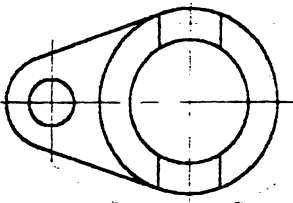
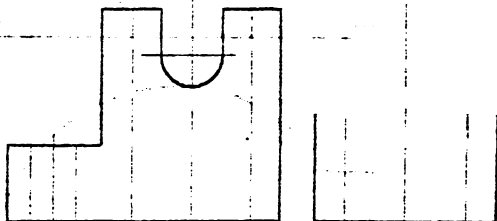
7. 补画主视图(15分).



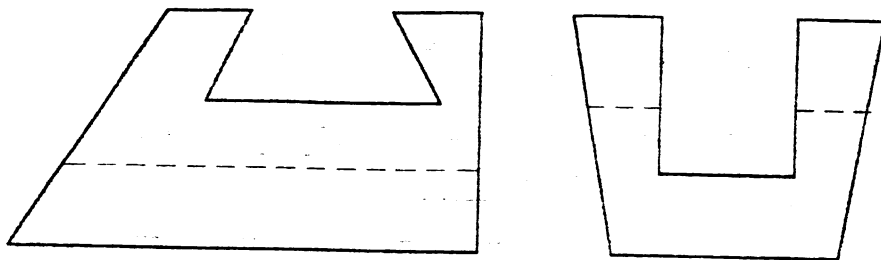
8. 补画左视图(14分).



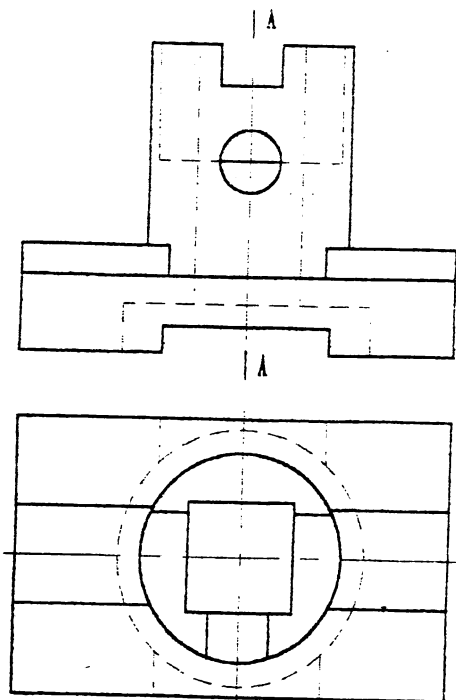
9. 补全视图中的漏线(10分).



10. 补画俯视图(14分).



11. 根据主、俯视图补画A-A全剖视图(15分).



A-A